

Overview of draft recommendations for Kent County Council

View this map online and draw your own boundaries:
www.consultation.lgbce.org.uk

Follow the review on Twitter: @LGBCE

If you are viewing this page online, click on the map to go straight to our interactive consultation area

Have your say at
www.consultation.lgbce.org.uk:

- view the map of our recommendations down to street level.
- draw your own boundaries online.
- zoom into the areas that interest you most.
- find more guidance on how to have your say.
- read the full report of our recommendations.
- send us your views directly.

Summary of our recommendations

Our draft recommendations propose that Kent's 81 county councillors should represent 65 single-member electoral divisions and eight two-member electoral divisions across the county.

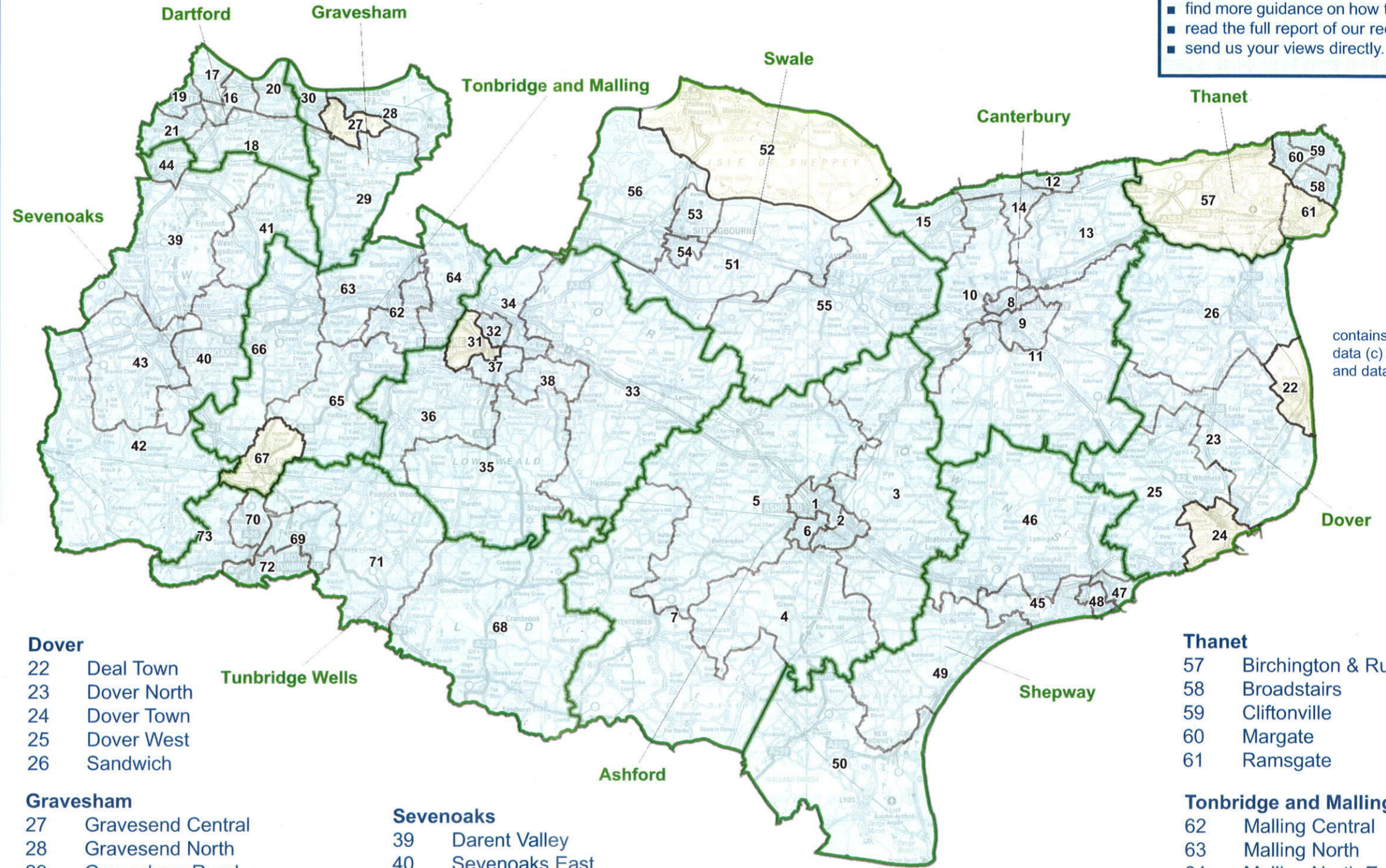
Before drawing up the draft recommendations, the Commission carried out a public consultation inviting proposals for a new pattern of divisions for 81 county councillors. We have considered all of the submissions we received during that phase of consultation.

The Commission believes the draft recommendations meet its obligations – which are set out in law – to:

- Deliver electoral equality for voters
- Reflect local community interests and identities
- Promote effective and convenient local government

However, the Commission welcomes local views on alternative patterns of divisions, anywhere in the county, that better meet the criteria above.

You can read the full report on our website at www.lgbce.org.uk.



contains Ordnance Survey data (c) Crown copyright and database rights 2015

Ashford

- 1 Ashford Central
- 2 Ashford East
- 3 Ashford Rural East
- 4 Ashford Rural South
- 5 Ashford Rural West
- 6 Ashford South
- 7 Tenterden

Canterbury

- 8 Canterbury City North
- 9 Canterbury City South
- 10 Canterbury North
- 11 Canterbury South
- 12 Herne Bay East
- 13 Herne Village & Sturry
- 14 Whitstable East & Herne Bay West
- 15 Whitstable West

Dartford

- 16 Dartford East
- 17 Dartford North East
- 18 Dartford Rural
- 19 Dartford West
- 20 Swanscombe & Greenhithe
- 21 Wilmington

Dover

- 22 Deal Town
- 23 Dover North
- 24 Dover Town
- 25 Dover West
- 26 Sandwich

Gravesham

- 27 Gravesend Central
- 28 Gravesend North
- 29 Gravesend Rural
- 30 Northfleet

Maidstone

- 31 Maidstone Central
- 32 Maidstone North East
- 33 Maidstone Rural East
- 34 Maidstone Rural North
- 35 Maidstone Rural South
- 36 Maidstone Rural West
- 37 Maidstone South
- 38 Maidstone South East

Sevenoaks

- 39 Darent Valley
- 40 Sevenoaks East
- 41 Sevenoaks North East
- 42 Sevenoaks Rural
- 43 Sevenoaks West
- 44 Swanley

Shepway

- 45 Cheriton, Sandgate & Hythe East
- 46 Elham Valley
- 47 Folkestone East
- 48 Folkestone West
- 49 Hythe West
- 50 Romney Marsh

Swale

- 51 Mid Swale
- 52 Sheppey
- 53 Sittingbourne North
- 54 Sittingbourne South
- 55 Swale East
- 56 Swale West

Thanet

- 57 Birchington & Rural
- 58 Broadstairs
- 59 Cliftonville
- 60 Margate
- 61 Ramsgate

Tonbridge and Malling

- 62 Malling Central
- 63 Malling North
- 64 Malling North East
- 65 Malling Rural East
- 66 Malling West
- 67 Tonbridge

Tunbridge Wells

- 68 Cranbrook
- 69 Tunbridge Wells East
- 70 Tunbridge Wells North
- 71 Tunbridge Wells Rural
- 72 Tunbridge Wells South
- 73 Tunbridge Wells West

Draft recommendations on the new electoral arrangements for Kent County Council

Summary report

Read the full report, view detailed maps and have your say at: www.consultation.lgbce.org.uk

Find out more at: www.lgbce.org.uk

Follow us on Twitter at: @LGBCE

Helping you to have your say:

We are now consulting local people on a new pattern of electoral divisions for Kent. The Commission has an open mind about its final recommendations and will consider every piece of evidence we receive from local groups and people. Every representation will be considered, regardless of whom it is from or whether it relates to the whole county or just a part of it.

If you agree with our recommendations, please let us know. If you don't think our recommendations are right for Kent, we want to hear alternative proposals for a different pattern of divisions.

The Commission aims to propose a pattern of electoral divisions for Kent which delivers:

- **Electoral equality:** each councillor represents a similar number of voters.
- **Community identity:** reflects the identity and interests of local communities.
- **Effective and convenient local government:** helping your council discharge its responsibilities effectively.

A good pattern of divisions should:

- Provide good electoral equality, with each councillor representing, as closely as possible, the same number of voters.
- Reflect community interests and identities and include evidence of community links.
- Be based on strong, easily identifiable boundaries.
- Help the council deliver effective and convenient local government.

Electoral equality:

- Does your proposal mean that councillors would represent roughly the same number of voters as elsewhere in the council area?

Community identity:

- **Transport links:** are there good links across your proposed division? Is there any form of public transport?
- **Community groups:** is there a parish council, residents association or another group that represents the area?
- **Facilities:** does your pattern of divisions reflect where local people go for shops, medical services, leisure facilities etc?
- **Interests:** what issues bind the community together or separate it from other parts of your area?
- **Identifiable boundaries:** are there natural or constructed features which make strong boundaries for your proposals?

Effective local government:

- Are any of the proposed divisions too large or small to be represented effectively?
- Are the proposed names of the electoral divisions appropriate?

Useful tips:

- Our website has a special consultation area where you can explore the maps and draw your own proposed boundaries. You can find it at www.consultation.lgbce.org.uk.
- We publish all submissions we receive on our website so you can follow what other people and organisations have told us. Go to: www.lgbce.org.uk

Have your say by writing to:

Review Officer (Kent)
LGBCE
14th floor, Millbank Tower
London
SW1P 4QP

Through our consultation area:

www.consultation.lgbce.org.uk
or by email to: reviews@lgbce.org.uk

The full report and interactive maps are available to view at www.lgbce.org.uk

Follow us on Twitter: @LGBCE

Who we are

The Local Government Boundary Commission for England is an independent body set up by Parliament. We are not part of government or any political party. We are accountable to Parliament through a committee of MPs chaired by the Speaker of the House of Commons.

Our main role is to carry out electoral reviews of local authorities throughout England.

Electoral review

An electoral review examines and proposes new electoral arrangements for a local authority. A local authority's electoral arrangements are:

- The total number of councillors representing the council's voters ('council size').
- The names, number and boundaries of wards or electoral divisions.
- The number of councillors representing each ward or division.

Why Kent?

We are conducting an electoral review of Kent County Council to deliver improved levels of electoral equality for local voters.

Kent currently has high levels of electoral inequality where some county councillors represent many more - or many fewer - voters than others. This means that the value of your vote - in county council elections - varies depending on where you live in Kent.

Our proposals

Kent County Council currently has 84 councillors. We propose that the council should have 81 councillors in future. The Commission believes that a council size of 81 members will ensure the council can discharge its roles and responsibilities effectively and provides for a division pattern that meets our statutory criteria.

Electoral arrangements

Our draft recommendations propose that Kent's 81 councillors should represent 65 single-member divisions and eight two-member divisions across the county.

You have until 6 July 2015 to have your say on the recommendations

Stage of review	Description
9 Dec 2014 - 2 Mar 2015	Public consultation on new division boundaries
12 May - 6 Jul 2015	Public consultation on draft recommendations for new electoral arrangements
29 Sep 2015	Publication of final recommendations by the Commission
May 2017	Subject to parliamentary approval - implementation of new arrangements at county elections